

**#HDHsantas**

**Snap and  
share**



## **THE SANTA FESTIVE FUNDRAISING PACK**

**Raise money for Helen & Douglas House  
to help local terminally ill children and  
young adults this Christmas.**

# Christmas Fundraising Ideas



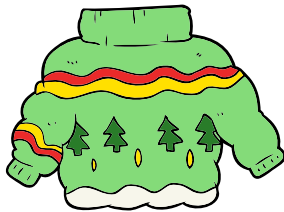
## Bosses or Teachers Dress as Santa

Ask your boss or teachers to dress as Santa for a day in December, in return for a £1 donation from colleagues or pupils.



## 'How quickly can Santa get dressed?' Challenge

Run a timed event to see who can get dressed as Santa the quickest, with a £1 entry fee and the winner gets a prize.



## Christmas Jumper Day

Hold your 'wear a Christmas jumper day' in aid of Helen & Douglas House this year – we're sure Santa will appear on one of them!



## Santa's Photobooth

Set up a photobooth with Christmas props and ask someone to be photographer, dressed as Santa of course. Take pictures of people being silly with Christmassy props with your camera and theirs and charge £1 per photo. You could have a prize for the best photo and encourage them to share their photos on social media using #HDHsantas.



## Christmas Bake-Off

Hold a bake-off competition and then sell your creations to raise money for Helen & Douglas House.



**Hold a Santa Festive Fundraising event with family, friends, pupils or work colleagues to celebrate Christmas together, whilst raising money to help local terminally ill children like Jessica.**

*'Knowing that we have the support of Helen & Douglas House takes some of the fear out of our situation, knowing there are people to talk to and to help us if the worst happens. Helen House is a real home-from-home.'*

*Victoria, Jessica's Mummy*

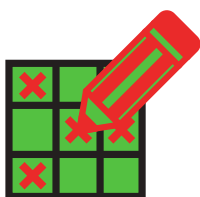


Jessica with Santa in Helen House

## **How your donation could help this Christmas:**

- £13 could pay for a Christmas meal at the hospice for a whole family.
- £35 could pay for an outreach nurse to visit a child at home over Christmas.
- £45 could pay for one of our doctors to visit a patient for an hour over Christmas.
- £55 could pay for a bereavement counselling session over the Christmas period.
- £300 could pay for a nurse for 12 hours on Christmas day.





## Crazy Christmas Challenges

Organise a crazy Christmas challenge at school or in the office and charge for entry. Games could include:

- Christmas bauble and spoon race.
- Tinsel crimbo limbo.
- Human Christmas tree – decorate someone as a Christmas tree as quickly as you can.
- Ready steady wrap – see who can wrap the same present the quickest.



## Christmas Bingo

Organise Christmas bingo to win Santa hats, or other Christmassy items, to get in the festive mood. Print off some of our special Christmas tree counters.

## Fundraising materials to order or download

Download at [www.hdh.org.uk](http://www.hdh.org.uk)

- Customised posters to promote your event.
- Christmas tree counters for bingo.

Order by calling 01865 799150 or email [fundraising@helenanddoulgas.org.uk](mailto:fundraising@helenanddoulgas.org.uk)

- Red Helen & Douglas House balloons.
- Helen & Douglas House collection tins or buckets.
- A Santa suit if you raise over £100 (subject to availability)
- A Christmas cracker donation tube which can hold £34 worth of pound coins.



Let us know when you are holding your Santa festive fundraising event by emailing us at [fundraising@helenanddoulglas.org.uk](mailto:fundraising@helenanddoulglas.org.uk) or calling 01865 799150